



## RESHAPING LOS ANGELES: OPPORTUNITIES AND CHALLENGES

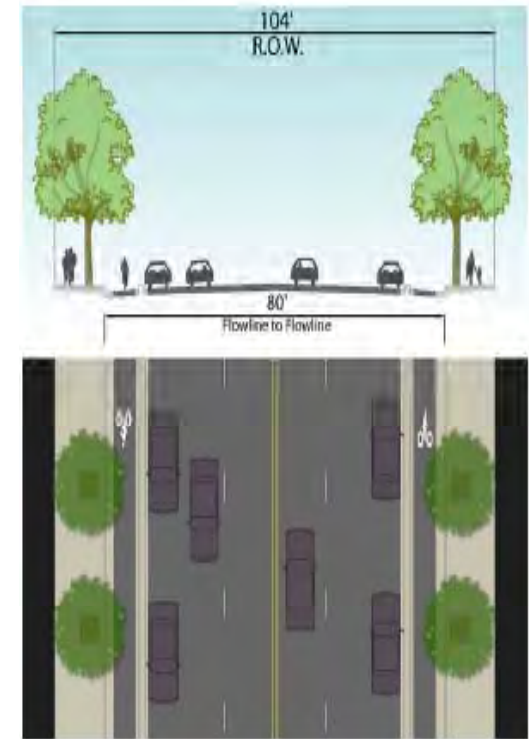
October 11, 2013

**Michael J. LoGrande, Director of Planning**  
City of Los Angeles, Department of City Planning

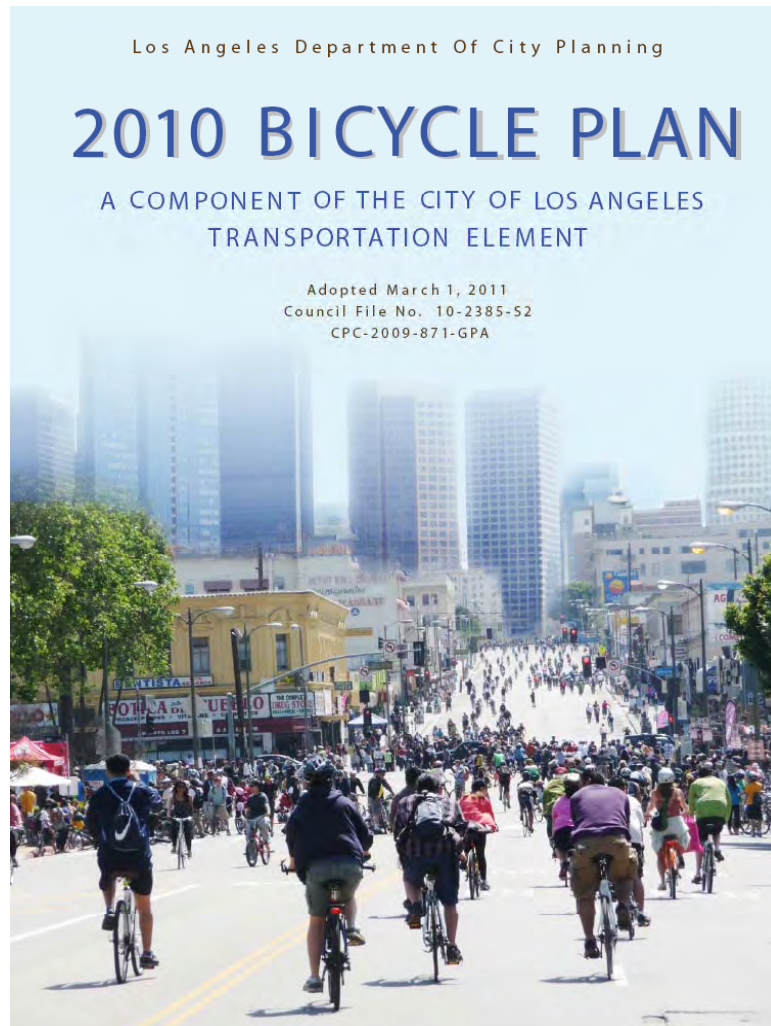
# New Choices for Angelenos



# Mobility Element of the General Plan



# Planning for Bicycles: 2010 Bicycle Plan and “MyFigueroa”



**myFIGUEROA.**  
**MyFIGUEROA.**  
**gofigueroa**

**Community Meeting**  
Tuesday April 9th, 5:30-8:00pm

**Taller Comunitario**  
Martes, 9 de abril, 5:30-8:00pm

**THE FIGUEROA CORRIDOR IS TRANSFORMING** to promote economic development, improve the pedestrian, bike, and transit experience, and beautify some of Los Angeles' most diverse communities.

Come see and hear about the improvements we have planned for Figueroa Street, 11th Street, and Martin Luther King Jr. Blvd.

**SHOW + TELL:** Updated streetscape design presentation and guest speaker Charlie Gandy, Livable Communities Inc., Long Beach.

**Free, informal & open to the public**  
Gratuito, informal e. Legado a todos/as  
Señal de traducción disponible | Se habla español FREE admission

**EL CORRIDOR DE FIGUEROA SE ESTÁ TRANSFORMANDO** para promover el desarrollo económico, mejorar las experiencias del peatón, ciclista y tránsito y embellecer unas de las comunidades más diversas de Los Angeles.

Venga a ver y escuchar sobre la mejora que hemos planeado para Figueroa Street, 11th Street, y Martin Luther King Jr. Blvd.

**MUESTRA Y EXPLICA:** Una presentación del diseño nuevo del paisaje urbano con el orador invitado Charlie Gandy, de Livable communities Inc., Long Beach

**Gratis, informal y abierto al público**  
Se habla español. Se aceptan traductores/as y señales de traducción. Se habla español. Se aceptan traductores/as y señales de traducción.

Address: Veterans Hall  
4700 Olympic Boulevard  
Room 5, 11th Street  
Los Angeles, CA 90007

**FOR MORE INFORMATION - PARA MÁS INFORMACIÓN**

myfigueroa.com  
facebook.com/whatyoufigueroa | twitter: @myfigueroa

(inglés) Tim Freeman, LADOT  
tim.freeman@ladot.org | 213.972.4952

(español) Blanca Rivera, TRUST South LA  
blanca@trustsouthla.org | 323.333.4118

# Additional TOD Supportive Parking Initiatives

- Bicycle Parking Ordinance



- TOD Parking Supply and Utilization Study



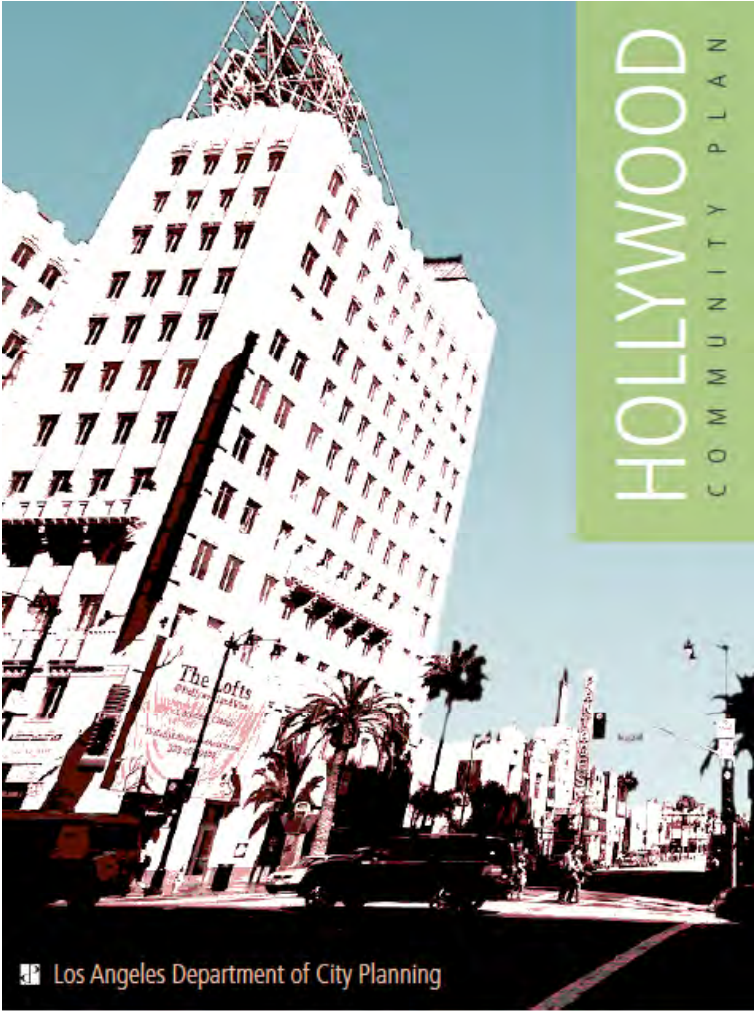
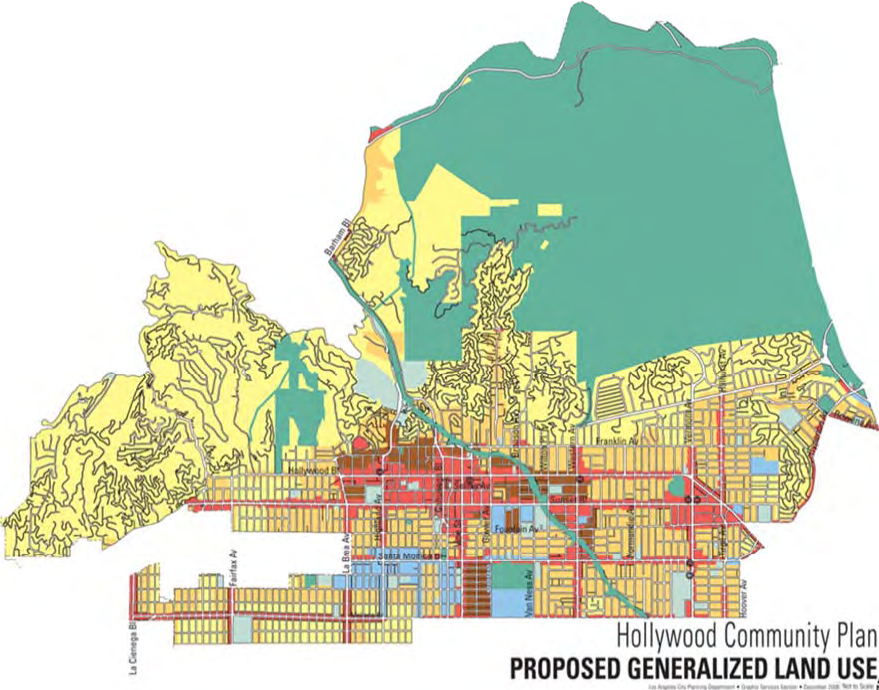
# Opportunities – Transit Investments

## Existing and Future Metro Stations in the City of Los Angeles

	LA City	LA County	Total	% TOTAL in LA City
Existing Stations	74*	53	127	58%
Future: Westside Subway	6	7	13	46%
Future: Expo Phase 2	4	3	7	57%
Future: Crenshaw	5	2	7	71%
Future: Regional Connector	4	0	4	100%
TOTAL	93	65	158	59%

\* Transit-Oriented District Plans completed or in progress for 26 station areas.

# Hollywood Community Plan



# Proposed Hollywood Millennium Project – with Capitol Records Tower





# More Information

Please visit: [Planning.lacity.org](http://Planning.lacity.org)

